

Galvanized EZP Rings

We also have standard Galvanized Rings in stock in sizes 4" thru 40".

Other sizes available in a short lead time



K & B DUCT NORTH CAROLINA FACILITY

Duct & Fabrication
8735 West Market Street
Greensboro, North Carolina
27409

Phone: 336.668.3773
Fax: 336.668.0043

K & B DUCT CINCINNATI FACILITY

Angle Rings & Components
6245 Creek Rd.

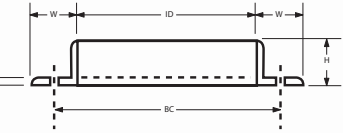
Cincinnati, OH 45242
Phone: 513-458-2600
Fax: 1-800-944-2156

K & B DUCT UTAH FACILITY

Duct & Fabrication
& Ring Distribution
Freeport Center
Bldg F-9, Section 2-B
Clearfield, UT84016

Phone: 801-728-6533
Fax: 801-728-6534

www.KBDUCT.com
kb-duct@cecoenviro.com



SIZE	H W T	ID	NO HOLES	SIZE HOLES	B.C.	WEIGHT LBS	
3	7/8x1x10 Ga	3-1/16	6	9/32	4-5/16	70	4B
4	15/16x1x10 Ga	4-1/16	6	9/32	5-5/16	.85	
5	1x1x10 Ga	5-1/16	6	9/32	6-5/16	1.18	
6	1x1x10 Ga	6-3/32	6	9/32	7-5/16	1.38	
7	1x1-1/8x10 Ga	7-1/8	6	3/8	8-1/2	1.73	
8	1x1-1/8x10 Ga	8-1/8	6	3/8	9-9/16	1.90	
9	1-1/8x1-1/4x10 Ga	9-1/8	6	7/16	10-5/8	2.55	
10	1-1/4x1-3/8x10 Ga	10-1/8	6	7/16	11-13/16	3.05	
11	1-1/4x1-3/8x10 Ga	11-1/8	6	7/16	12-3/4	3.25	
12	1-1/4x1-1/2x10 Ga	12-1/8	8	7/16	14	3.88	
13	1-1/2x1-1/2x10 Ga	13-1/8	8	7/16	15	4.25	
14	1-1/2x1-1/2x10 Ga	14-1/8	8	7/16	16	4.75	
15	1-1/2x1-1/2x3/16	15-1/8	8	7/16	17	7.25	
16	1-1/2x1-1/2x3/16	16-1/8	8	7/16	18	8.00	
17	1-1/2x1-1/2x3/16	17-1/8	8	7/16	19	8.25	
18	1-1/2x1-1/2x3/16	18-1/8	8	7/16	20	8.50	
19	1-1/2x1-1/2x3/16	19-1/8	12	7/16	20-3/4	8.75	
20	1-1/2x1-1/2x3/16	20-1/8	12	7/16	21-3/4	9.50	
21	1-1/2x1-1/2x3/16	21-1/8	12	7/16	22-3/4	10.25	
22	1-1/2x1-1/2x3/16	22-1/8	12	7/16	23-3/4	10.75	
23	1-1/2x1-1/2x3/16	23-1/8	12	7/16	24-7/8	11.25	
24	1-1/2x1-1/2x3/16	24-1/8	12	7/16	25-7/8	11.50	
25	1-1/2x1-1/2x3/16	25-1/8	16	7/16	26-7/8	12.00	
26	2x2x3/16	26-1/8	16	7/16	28-3/8	16.75	
27	2x2x3/16	27-1/8	16	7/16	29-3/8	17.38	
28	2x2x3/16	28-1/8	16	7/16	30-3/8	18.00	
29	2x2x3/16	29-1/8	16	7/16	31-3/8	18.75	
30	2x2x3/16	30-1/8	16	7/16	32-3/8	19.50	
31	2x2x3/16	31-1/8	16	7/16	33-3/8	20.38	
32	2x2x3/16	32-1/8	16	7/16	34-3/8	20.75	
33	2x2x3/16	33-1/8	16	7/16	35-3/8	21.25	
34	2x2x3/16	34-1/8	16	7/16	36-3/8	22.00	
35	2x2x3/16	35-1/8	16	7/16	37-3/8	22.50	
36	2x2x3/16	36-1/8	16	7/16	38-3/8	23.00	
37	2x2x3/16	37-1/8	24	7/16	39-3/8	23.75	
38	2x2x3/16	38-1/8	24	7/16	40-3/8	24.50	
39	2x2x3/16	39-1/8	24	7/16	41-3/8	25.00	
40	2x2x3/16	40-1/8	24	7/16	42-3/8	25.75	
41	2x2x3/16	41-1/8	24	7/16	43-3/8	26.13	
42	2x2x3/16	42-1/8	24	7/16	44-3/8	26.50	
43	2x2x3/16	43-1/8	24	7/16	45-3/8	27.38	
44	2x2x3/16	44-1/8	24	7/16	46-3/8	28.00	
45	2x2x3/16	45-1/8	24	7/16	47-3/8	28.63	
46	2x2x3/16	46-1/8	24	7/16	48-3/8	29.00	
47	2x2x3/16	47-1/8	24	7/16	49-3/8	29.88	
48	2x2x3/16	48-1/8	24	7/16	50-3/8	30.75	
49	2x2x3/16	49-1/8	24	7/16	51-3/8	31.50	
50	2x2x3/16	50-1/8	24	7/16	52-3/8	32.00	
52	2x2x3/16	52-1/8	24	7/16	54-3/8	33.75	
54	2x2x3/16	54-1/8	24	7/16	56-3/8	35.00	
56	2x2x3/16	56-1/8	24	7/16	58-3/8	36.25	
58	2x2x3/16	58-1/8	32	7/16	60-3/8	37.50	
60	2x2x3/16	60-1/8	32	7/16	62-3/8	38.75	
62	2x2x3/16	62-1/8	32	7/16	64-3/8	40.00	
64	2x2x3/16	64-1/8	32	7/16	66-3/8	41.50	
66	2x2x3/16	66-1/8	36	7/16	68-3/8	42.75	
68	2x2x3/16	68-1/8	36	7/16	70-3/8	44.00	
70	2x2x3/16	70-1/8	36	7/16	72-3/8	45.25	
72	2x2x3/16	72-1/8	36	7/16	74-3/8	46.50	

Note: Gaskets are in stock for Kirk & Blum rings in sizes 3" through 50". They are 1/8" thick black neoprene and punched to K&B specifications. Other gasket materials are available as a special order.

Oval, square and rectangular flanges are also available.

Special angle rings and gaskets available.